



# EMPLOYER BULLETIN

May 2011

## Checking In With Employers

In the next week PEPP's Customer Focus Coordinators (CFCs) will be asking you to confirm the contribution rates for your employees and provide us with updated contact information. Please remember the June 30 deadline.

## Presenting...PEPP!

In our March employer bulletin, we asked you to communicate news of upcoming presentations from PEPP by sending out a poster. Thanks to you we had a wonderful response, and would like your help again. You can use the attached poster to let your employees know where and when they can learn more about PEPP. Print it and post it in a visible area, or e-mail it to employees at other locations.

If the scheduled sessions don't work for you, we encourage you to consider hosting a presentation for your own employees. This allows you to pick a date, time and location that works best for you and your employees. If you'd like to arrange a session of *RetireWithEase* or *InvestWithEase*, call the number below and ask for a Retirement Information Consultant (RIC) or send an e-mail to [RIC@peba.gov.sk.ca](mailto:RIC@peba.gov.sk.ca). Ready, Set, PEPP presentations can be arranged by calling the number below and asking for a CFC or by sending an e-mail to [cfc.pepp@peba.gov.sk.ca](mailto:cfc.pepp@peba.gov.sk.ca)

## What to do When an Employee Becomes Permanent

If one of your employees was non-permanent, but is moving into a permanent position, you may have to notify PEPP. Or you might not.

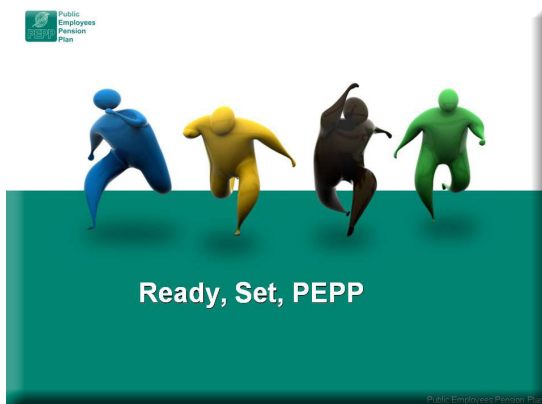
Ultimately, you need to find out if that employee is a PEPP member. If the employee is already in the Plan – good news – you don't have to do anything! PEPP will already have all the information we need. However, if that employee is not yet enrolled in the Plan, they must enrol when they become a permanent employee. Fill out a [Notice of Member Enrolment form](#) and provide the employee with an Enrolment Kit, just as you would if hiring a new permanent employee.

The [Employer Bulletin](#) is published as a service for the employers of PEPP.  
For further information or clarification, contact PEPP's Customer Focus Coordinators:

Phone: 787-5442 • Toll free: 1-877-275-7377 • E-mail: [cfc.pepp@peba.gov.sk.ca](mailto:cfc.pepp@peba.gov.sk.ca)

# SOMETHING FOR EVERYONE

## 2011 PEPP PRESENTATIONS



Are you puzzled by your pension plan? Attend Ready, Set, PEPP to learn the basics of the Plan. The 90-minute presentation covers what PEPP means for you as a working member, your options when you retire or change jobs, and what people and tools PEPP employs to help you.

PRESENTATIONS AVAILABLE IN:

**Swift Current** June 7 at 10:00 a.m. and 1:00 p.m.  
**Saskatoon** June 9 at 10:00 a.m. and 1:00 p.m.  
**Regina** June 14 at 10:00 a.m.



Part of being a PEPP member means making investment decisions. If you want to learn about investing – with PEPP and in general – spend two hours with our Retirement Information Consultants (RICs). The RICs hold a CERTIFIED FINANCIAL PLANNER designation and use that expertise to help you understand investing and all that comes with it.

PRESENTATIONS AVAILABLE IN:

**Saskatoon** June 3 at 8:30 a.m.



For those approaching retirement (regardless of age), the idea of retirement planning can be daunting. Let us help! Spend a day with the Retirement Information Consultants (RICs) so you can make informed decisions about your retirement. Find out more about retirement planning and what that means for you as a member of PEPP. Workshops begin at 8:30 a.m.

PRESENTATIONS AVAILABLE IN:

<b>North Battleford</b>	May 18	September 13
<b>Prince Albert</b>	June 22	
<b>La Ronge</b>	August 17	
<b>Melfort</b>	August 18	
<b>Moose Jaw</b>	September 8	
<b>Swift Current</b>	September 20	September 21
<b>Yorkton</b>	September 27	September 28
<b>Estevan</b>	November 22	
<b>Weyburn</b>	November 23	
<b>Saskatoon</b>	November 29	November 30
<b>Regina</b>	December 5	December 6