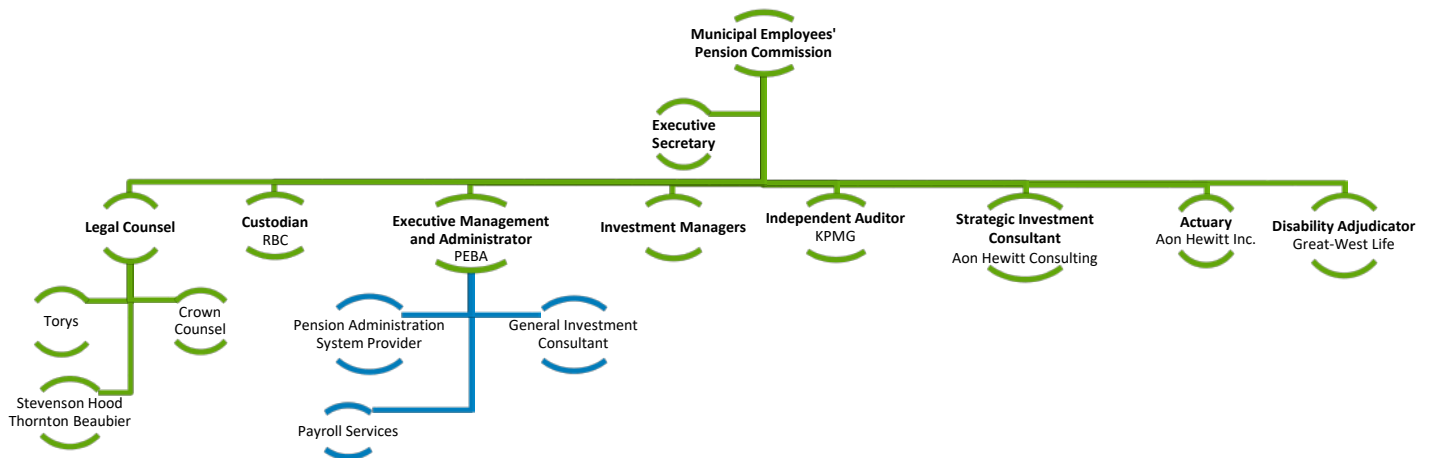


I. Mandate and Roles

Section 3 – Organizational Chart of Plan’s Administration

3.1 Reporting Structure to Commission



- Crown Counsel provides advice on legal matters and draft plan amendments. Stevenson Hood Thornton Beaubier LLP and Torys LLP also provide legal advice.
- RBC Investor & Treasury Services Ltd. provides custody of assets, settlement of investment transactions, payroll services and SIP&P compliance monitoring.
- Investment managers provide management of investments in compliance with SIP&P, transaction reports and performance analysis of managed assets. A list of current Investment Managers is available in the most recent Investment Monitoring Report, Part 1.
- PEBA provides executive management and administrative services, and is in the process of taking over payroll services from the Custodian.
- KPMG provides audit services to the Commission.
- Aon Hewitt Consulting provides strategic investment counselling services to the Commission.
- Aon Hewitt Inc. provides funding valuations, determines plan solvency, system verification of calculations.
- Great West Life Assurance Company provides disability adjudication services for the Commission.

Contracts are set as per the Acquisition and Retention of Services Policy (Section 8 of this document).

Dates when contracts are due to be reviewed or tendered can be found in Section 8 of the Periodic Checklist. The Periodic Checklist is reported to the Commission twice per year, usually in February and September.

3.2 History

Approval date:	October 21, 2005; September 21, 2007; November 21, 2008; November 26, 2010; November 25, 2011; November 15, 2013; and March 16, 2018
Last review:	March 16, 2018
Next scheduled review:	November 2019